



KASTAL

ART
OF
LIVING

2020 2021



Everyone loves lavishness and simplicity life, especially when it comes to interiors.

Reality is; there are more and more of those who realize the true importance of having a space taken care of by specialists, with a presentation comfortable and pleasant for all.

KASTAL Design & Build, represented by May Makarem as a cofounder and CEO of the company, gathers inspirations not only from rapidly changing urbanization environment evolution, but also from everyday lifestyle.

However, our aim is always to wave all design elements together in order to

create a whole that is more than the sum of its parts.

There is no set formula for how we produce luxurious surroundings. It's more about creating a certain feel for the space than following a few of hard and fast rules.

AWAKENING JOY OF YOUR SPACE

Our memories are connected to places, and that's what would always create ourselves. Interior design is a complex subject involving many related considerations in our modern, technological world. And every one of us has his own imagination about his future home, it's part of our identity is not only who we are but who we seek to be, as an extension of our values, hopes, and dreams.

We're subconsciously orchestrating the space to help you get closer to the concepts and qualities you're drawn to, and wish to find in yourself. and that's what would bring joy connected to your place and memories.

The essence of our architecture and interior design services will always be about people, and their passion, and because spaces are not only how it looks like but also how they feel like. We've learned that the environment we craft for ourselves plays a crucial role in nurturing our wellbeing on a daily basis.



WHAT WE DO

Professionalism and honesty are top on our list. providing turn-key services for all our projects. Commencing at concept and continuing beyond the project’s final punch list.

CONCEPTUAL DESIGN

Our programming may include space allocation, and steps are often overlapped in time sequence.

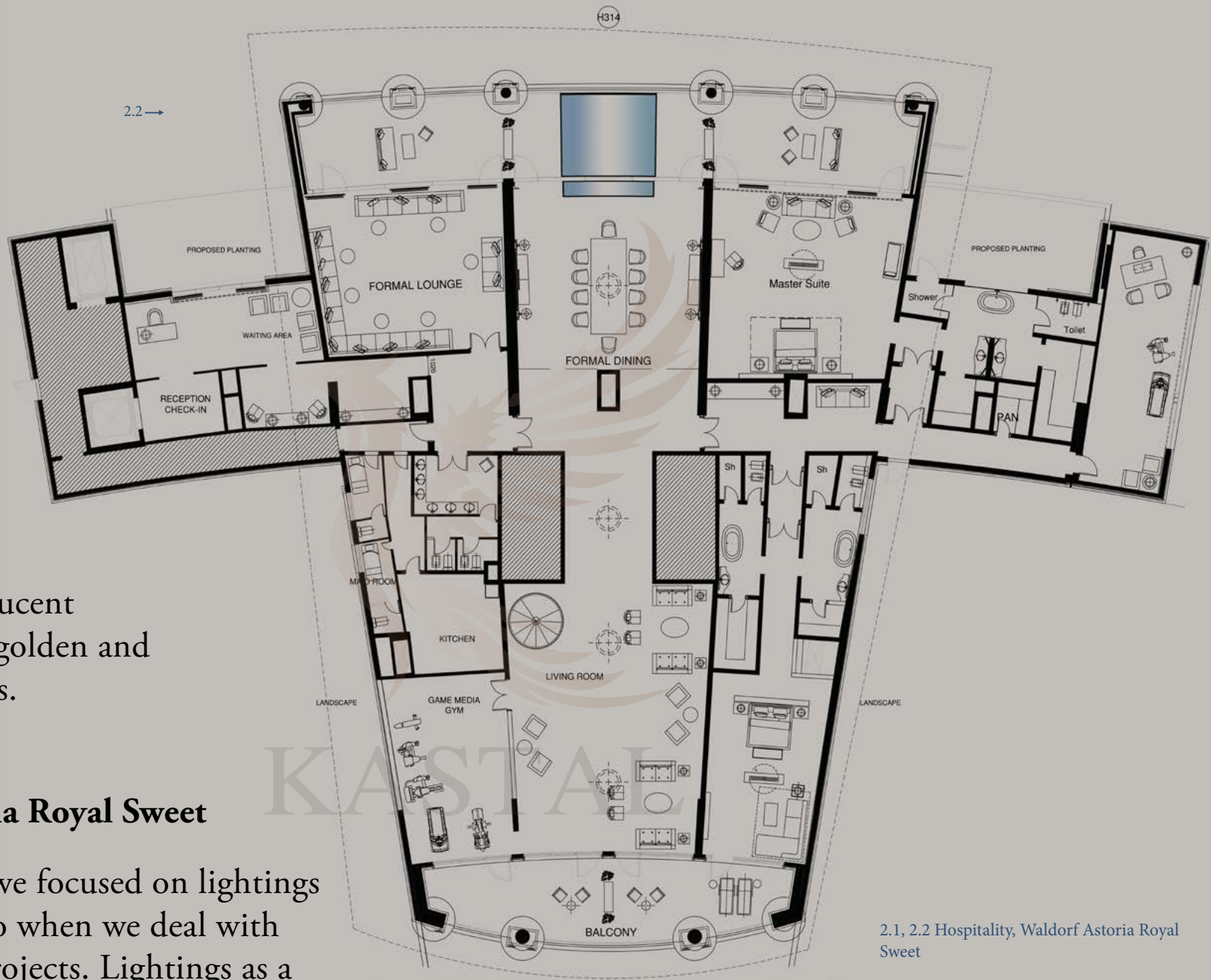
1.1, 1.2, 1.5, The Living Room of Abu Dhabi Private Villa Interior Design

1.3, 1.4, The Plans of Abu Dhabi Private Villa consist of two levels Divided by open void. Large two stories glass area toward swimming pool and desert beyond. Designed by May Makarem





HOSPITALITY In hospitality sector, we have done few hotels projects, royal sweets and lobbies, in addition to many restaurants, spas and salons emphasizing on most selective spot of glamor and luxury



elements translucent
shine-through golden and
crystal elements.

Waldorf Astoria Royal Sweet

In this project we focused on lightings as we usually do when we deal with public places projects. Lightings as a very important aspect of designing the interior spaces,

2.1, 2.2 Hospitality, Waldorf Astoria Royal Sweet

The Plans of Abu Dhabi Private Villa consist of two levels Divided by open void. Large two stories glass area toward swimming pool and desert beyond. Designed by May Makarem



2.3, 2.4, 2.5 Hospitality, Waldorf Astoria Royal Sweet 2.3 Royal living area becomes comfortable environment, rich with golden elements. Designed by May Makarem.



Especially hidden light, regardless the technology or sources of lights considering the use of day light and the certain mood that we are going to achieve by addressing the rest of the day lightings and layer them in a way to get that experience of calm and beauty allowing us bring sparkle into the area. And our solutions



must be developed with deep respect for the project budget, and to reflect the clients' lifestyle and aesthetic goals at the same time.

2.6 →



2.6, 2.7 Hospitality, Waldorf Astoria Royal Sweet 2.6 Dining area with a long table seized the place and wide antique mirrors in golden ornamental frame. Designed by May Makarem

2.7 →



Waldorf Astoria Royal Sweet 2.7 Living area pathway in a lively mix of plants and jellyfish aquarium. Designed by May Makarem

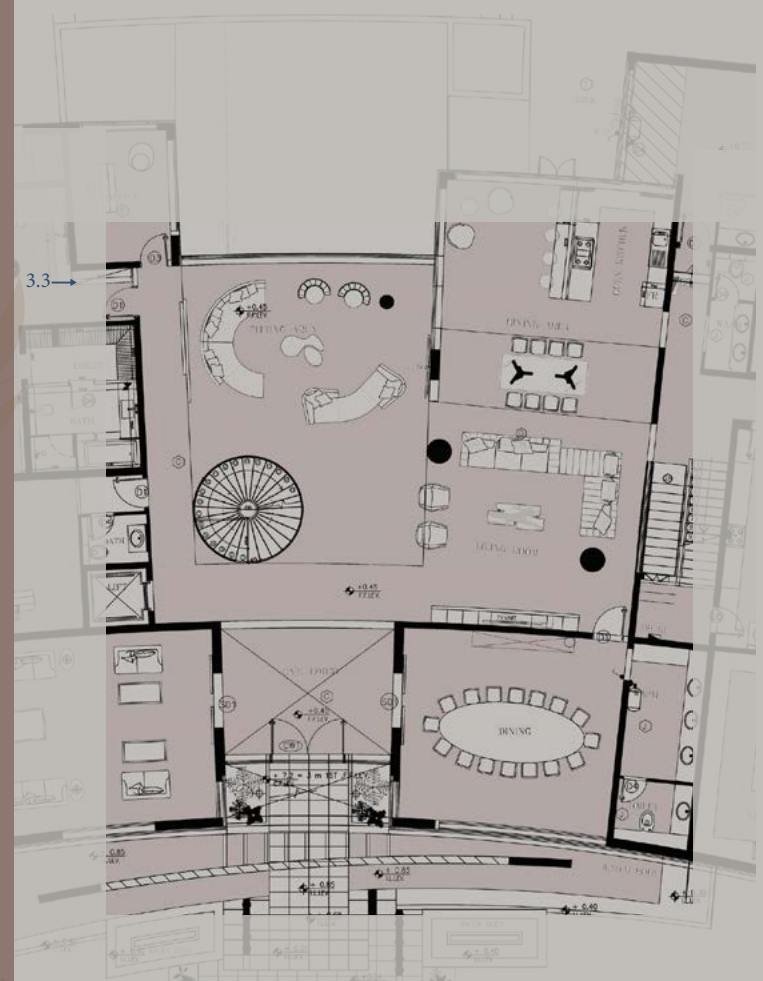


3.1, 3.2, 3.3 Al Khawanej Private Villa, Dubai.
3.1 The general look is really open provides a strong sense of elegance and boldness. Designed by May Makarem



RESIDENTIAL AND PRIVATE VILLAS

After getting approval on design concept, the next phase starts. Through establishing the lifestyle and professional necessities of the space and help our clients realize their concept the way possible, offering customized solutions to fit every situation.



3.3 The Plans of Al Khawanej Private Villa, Dubai. Consists of two levels Divided by open void. Large two stories glass area toward swimming pool. Designed by May Makarem



3.6 Al Khawanej Private Villa, Dubai. Grand and majestic entrance in a golden architrave door and long horn

handles, plants and glass on the sides dominate the connection with the outdoors. designed by May Makarem



3.2, 3.5 Living area. Huge aquarium all over the wall covers the stairs beyond as the staircase remain visible but in glamour of blurry blue shades. Designed by May Makarem



We provide value to our clients by opting the quality and sustainability. The final design ensures a beautiful, comfortable, and most importantly a functional space for our clients.



3.6 Al Khawaneej Private Villa, Dubai. Grand and majestic entrance in a golden architrave door and long horn handles, plants and glass on the sides dominate the connection with the outdoors.

3.7 Design elements by using over than 3.m meter high golden crystal chandelier in this scene, have come to form the basis for magnificent and elevated standards of design concept, designed by May Makarem

3.8→



3.9→



FURNITURE SELECTION

It is furniture that makes the architectural space into a useful and personal place where human activities can take place with comfort and convenience. It is not surprising, then, that most people think of an interior as the

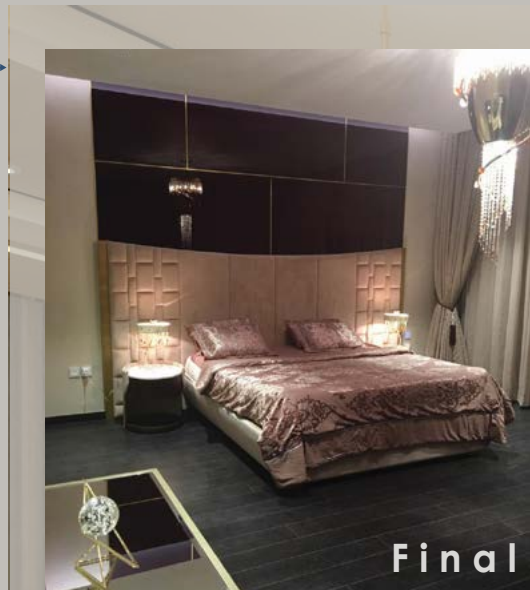


sum of its furnishings, and the completed interior's visual character and comfort are largely derived from the furniture within it.

3.8, 3.9 Al Khawaneej Private Villa, Dubai.

3.8 The Plan of Majlis modern style, 3.9 wall partitions and cladding have been covered with glass marble and mirrors, floors in calacatta marble divided by brass strips 1cm.

Furniture selected by May Makarem

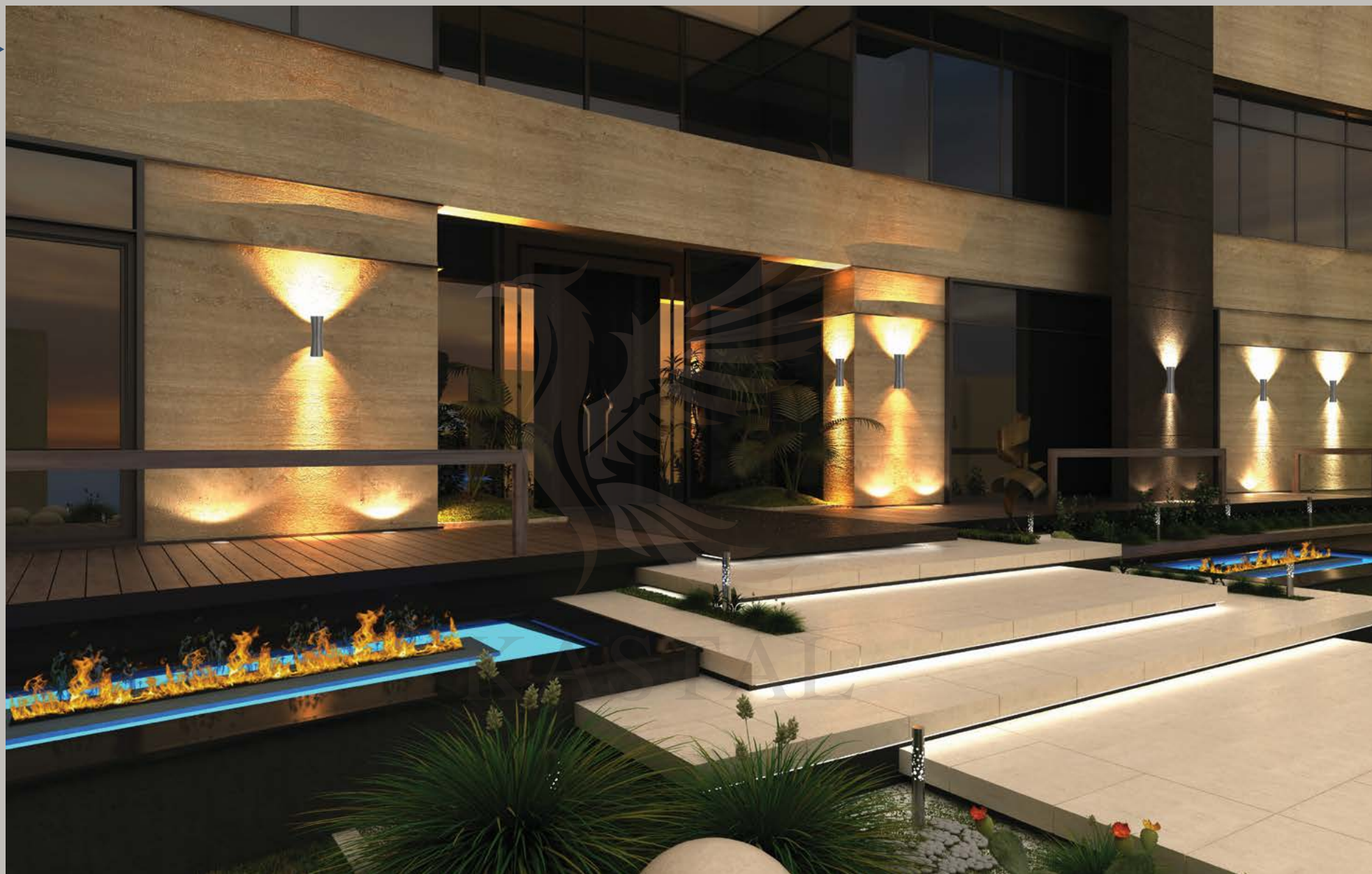


3.10, 3.11, 3.12 Al Khawanej Private Villa, Dubai.
3.10 Real picture of Master bedroom furniture selection and final design concept . By May Makarem

3.11 Proposed Master bedroom furniture selection and design concept . By May Makarem



Al Khawanej Private Villa, Dubai.
3.12 First floor family living area furniture selection and design concept by May Makarem



3.12, 3.13 Al Khawanej Private Villa, Dubai.
3.10 Facade close view shows water bodies and fire
flame from within.

3.13 Facade view, Material Selection and design
concept by May Makarem.

LANDSCAPING

After we put our plans and final set of exterior design, we comprehend them under a general understanding of the site as one of the chief essentials for our successful landscaping including observation different natural features like terrain, drought, soil qualities, prevailing winds, and the system of native flora and fauna must be taken into account, and here in UAE the land is not fit



for landscaping, and in order to landscape it, the land must be reshaped by calling specialists in grading.

We know what type of stones and marble fit with outdoors under humid, sultry weather, to be solid enough to resist the sun and heat in such weather climate, over all durable and stain-resistant.



4.1, 4.2 Villa in Emirates Hills, Dubai
4.1 Family Living & dining area.

4.2 Master bathroom, selection and finishes.
Designed by May Makarem

We maintain quality control from the start of first line in space planning to final piece of furniture. It's important to evaluate the utility and use of materials before choosing them such fabric, wood, veneer, laminates & metal ...etc. As there is a place and application for each type of material.



We work closely with our trustworthy factories and contractors which provide services in Joinery, Glass fabrication and installation, metal manufacture, MEP, and GRG & GRC work...



5.1, 5.2, 5.3, 5.4, 5.5, Meydan Sobha Villa, Dubai
5.1 Family Living & dining area,
Designed by May Makarem

5.2, 5.3 Actual Family Living & dining area,
5.4 Actual Family area first floor, 5.5 Formal
living area.

However, the best way to get the best of our fit-out work is based on our key people who know what they are doing, who put their hearts into work, and whose passion is success having good sense for details and enough enthusiasm. On the right you will see real pictures of our executed work and final result.





5.6, 5.7, 5.8, 5.9 Meydan Sobha Villa, Dubai
5.6 Family Living & Entrance with staircase in green on wall side, and water feature next to the main door. Designed by May Makarem.



Meydan Sobha Villa, Dubai
5.7 Actual Formal Family Living. 5.8, 5.9 Proposed Formal Family Living Area.

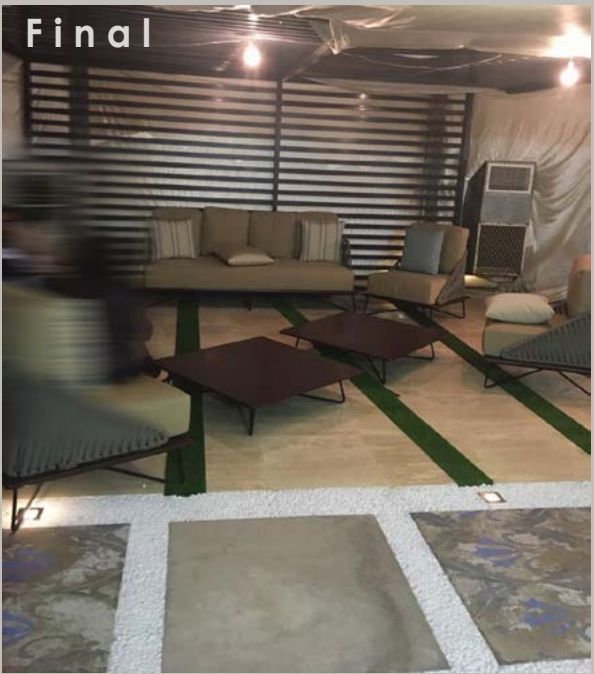
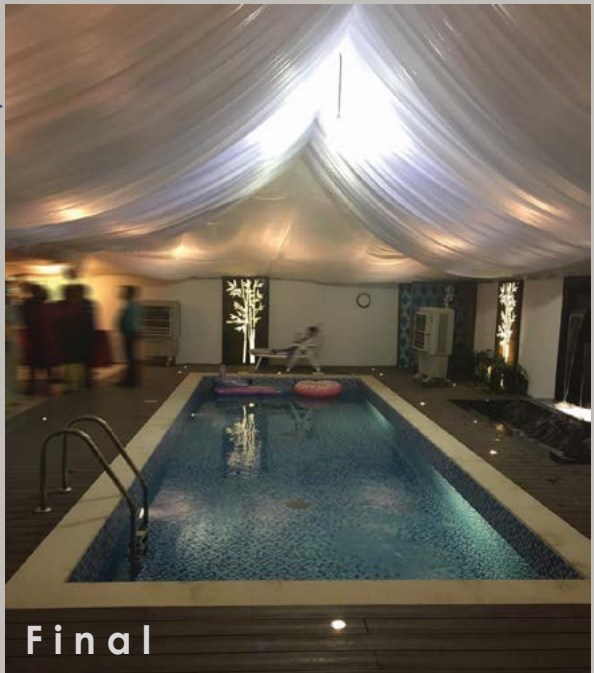




Meydan Sobha Villa, Dubai. 5.10 Cabana Outdoor Area Proposed Design Concept. 5.11 Swimming pool view final result, the fountain

is the only piece that has been changed as it's shown in picture 5.13. 5.12 Cabana view final result facing

swimming pool and kitchen. 5.14, 5.15 Actual outdoor Entrance area real picture in greenery and lights.



CORPORATE

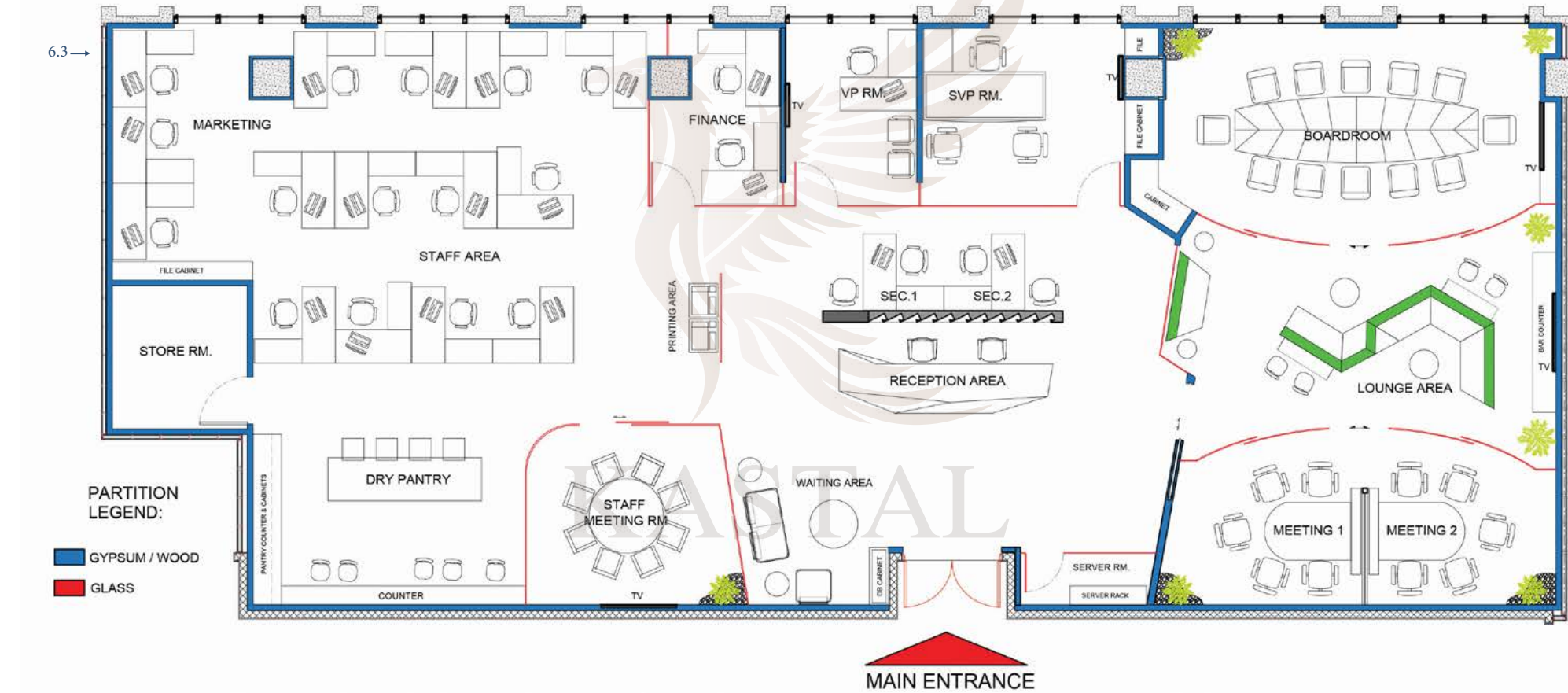
Through ingenuity and innovative ideas, we are committed to taking workplace design into a new level, utilizing data and research to ensure that their employees can thrive in their daily work experience.

Our fundamental goals in designing offices is to change the norm of mind set about tedious and uninspiring workplaces by providing the feel of comfort and making them a productive and motivating environment.



We assist to execute the interior areas by providing comprehensive details and trusted suppliers and contractors with constant visits and supervising the site work progress to assure every activity is running according to schedule and deadlines.

6.1, 6.2, 6.3 IP Global Office, Marina Plaza, Dubai Marina, UAE
6.1, 6.2 Meeting room. 6.3 The Plan of IP Global office.
Designed by May Makarem





One and frequent tip we use in designing any office; is to keep it bright and pleasant, regardless of being an ordinary office or VIP one,

7.1,7.2, 7.3 Bakheet Group Office. 7.1 Entrance and reception
7.2 Walnut & Ebony Veneer wall cladding with indirect light.
Designed by May Makarem

Bakheet Group Office. 7.3 Lift lobby and waiting area.
Symmetrical Ebony Veneer wall cladding with indirect light
on the corners.



7.4, 7.5 Bakheet Group Office.
7.4 CEO office. Designed by May Makarem

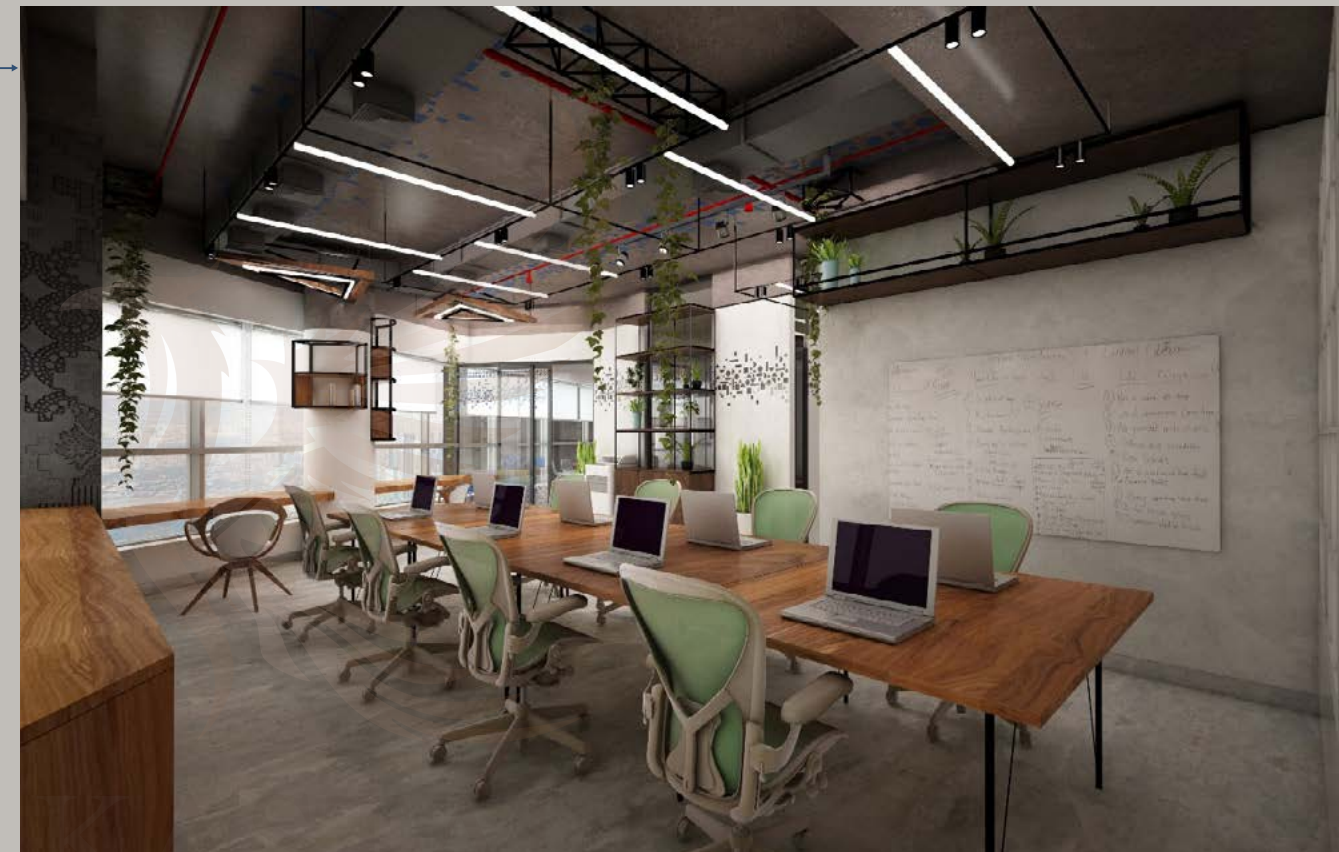


Bakheet Group Office.
7.5 CEO office.



8.1, 8.2 DNM office, Barsha Heights Dubai
8.1 Entrance & Reception concept

While we also allow a lot of wood veneer and shiny surfaces in our design to give this feel of glow and freshness all the time along with elegant look no matter what the cost is. As we always exceed client's expectation in professional work through our long experience in health care design and build field all over UAE, working with Individuals or government clients, always to serve one purpose; getting everything done the way we planned it.



We are extremely flexible and fast, trust that communication and care for our clients' requirements in achieving the best quality, be it small or big projects we design to deliver the best for everyone.

DNM office, Barsha Heights Dubai
8.2 Workstation Area. Designed by May Makarem



8.3, 8.4 DNM office, Barsha Heights Dubai
8.3 Managing Partner Office.



DNM office, Barsha Heights Dubai
8.4 Small Meeting Room attached to manager office.



9.1, 9.2 Czech Rehabilitation Hospital, Al Ain, UAE.
9.1 Main entrance and lobby area design concept to
be open space with pendant plants to complete nature

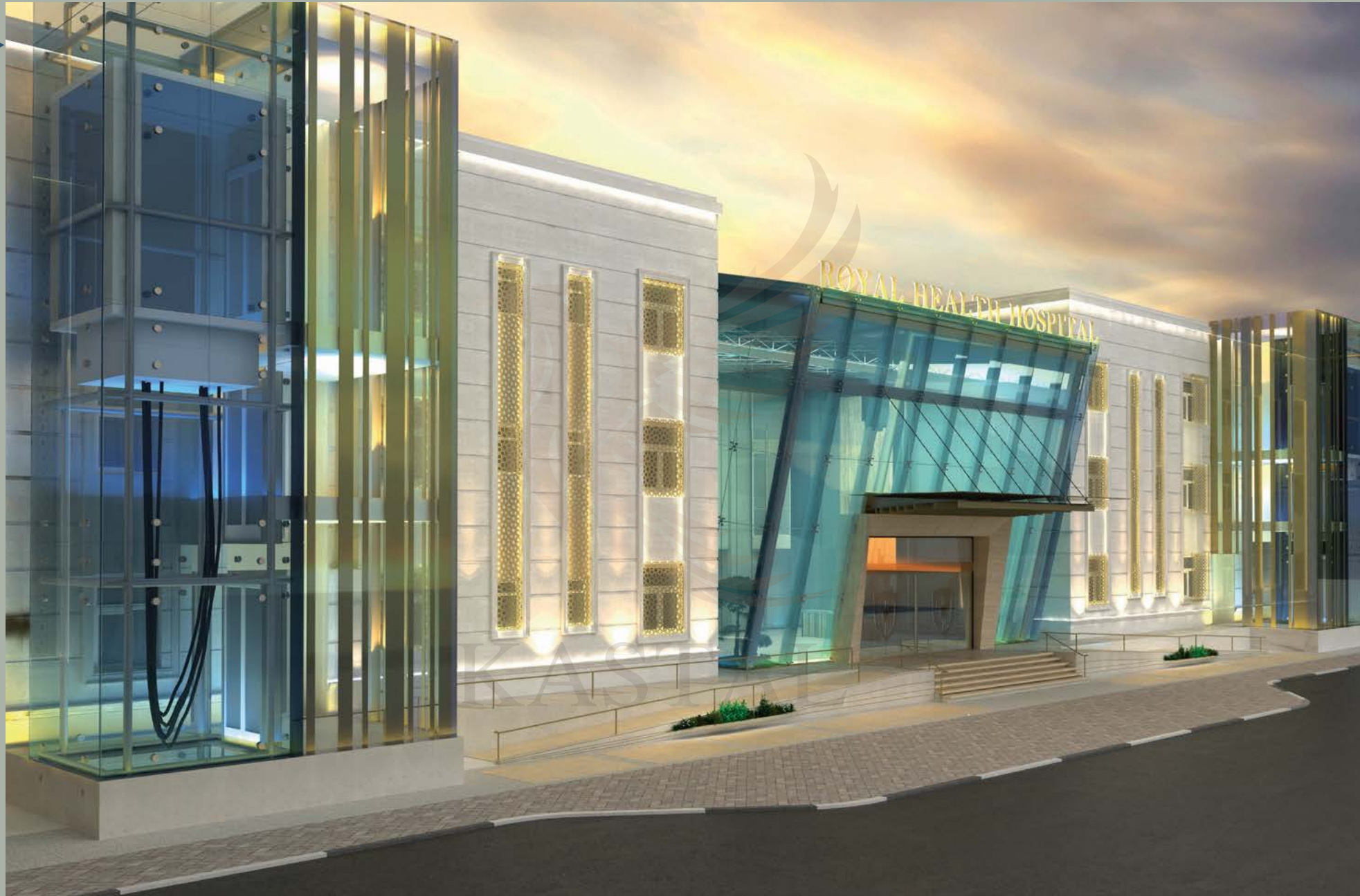
elements such wood, water, stone floor and sounds.
Designed by May Makarem. 9.2 mood picture

ARCHITECTURE & PUBLIC PLACES

CZECH REHABILITATION HOSPITAL AL AIN, UAE

One of our very successful projects that we made its design, renovation and finish from A to Z in Al Ain, and let's elaborate a little bit before we get you to the final result. The left side picture is from the initial design stage which came to express the nature in some way to provide that sort of relaxing environment for rehabilitation hospital through greenery on the walls and pendent plants from ceiling, water features and vast height. The right-side picture is from the mood board of general look and feel.

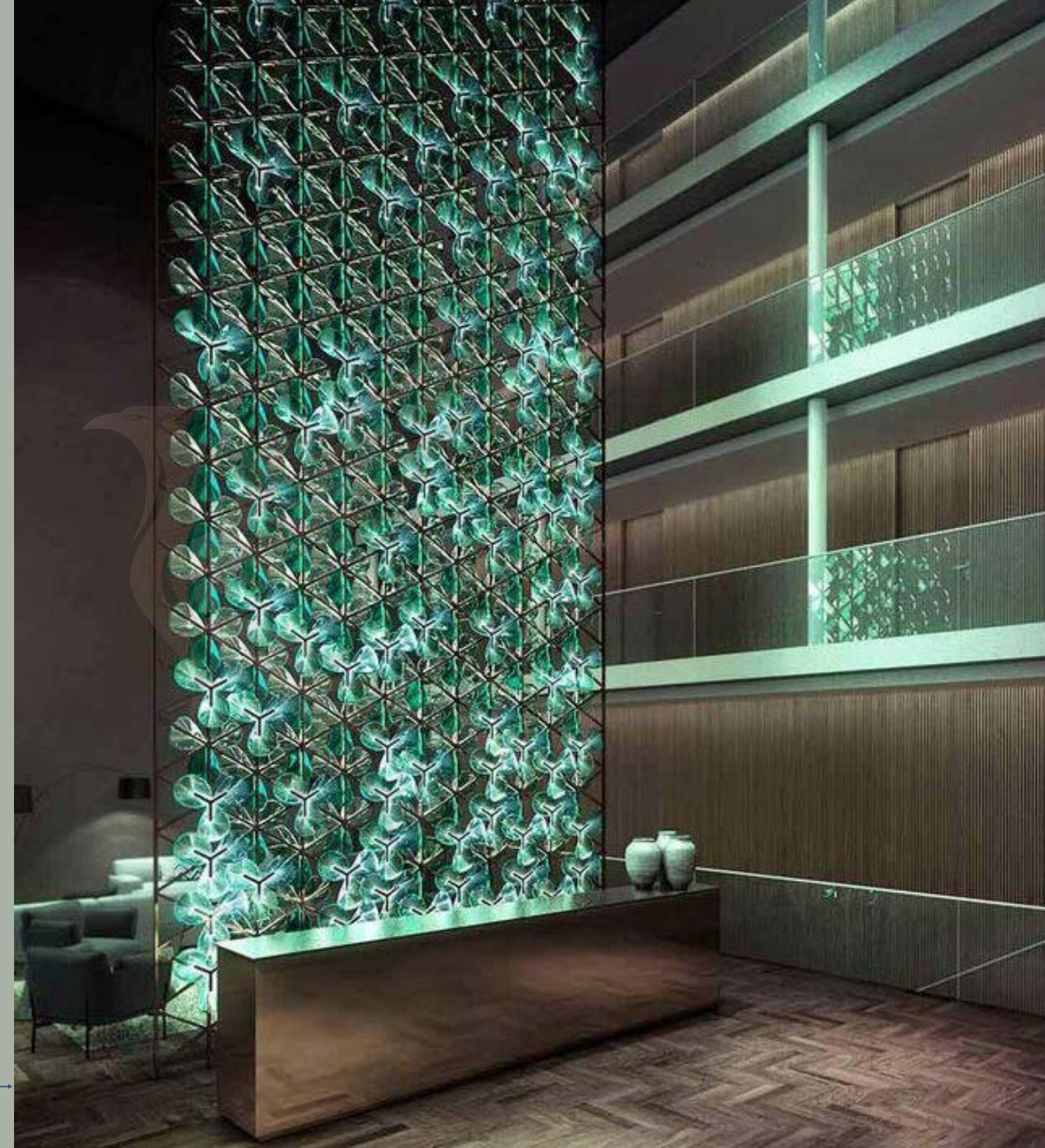




Czech Rehabilitation Hospital, Al Ain, UAE. 9.3 Front Façade view with landscaping designed by May Makarem. 9.4 Picture from Mood Board.

The exterior consists of tilted glass cube in the center of front facade, which has been merged between two portions of the old building as new feature in a very contemporary and fresh look.

Here we tried to redesign it by renovating an old hospital, through adding Islamic Mashrabiya on windows, and two glass lifts on the sides, trying to enhance the general typical look of front façade but in contemporary way and future mind.

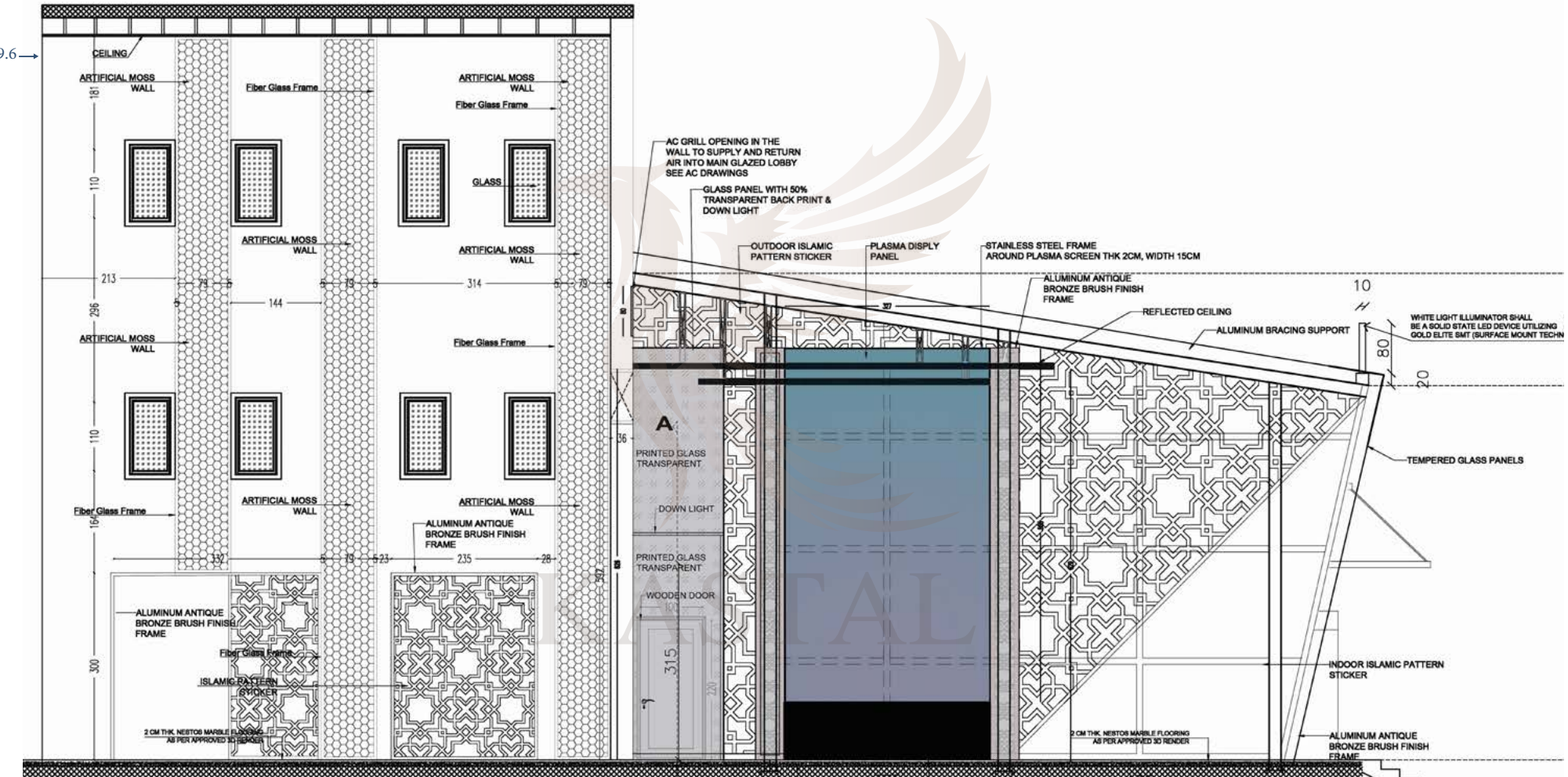




The interior design follows the right path to pursue to the peaceful and relaxed environment with no direct hospital references. Public space consists of Lobby in large glass area while the walls feature light-colored paint and with natural marble stone flooring. The calm color from floor-to-ceiling windows blur the boundaries between inside and out.

Corridors, public areas, sub nursing stations, treatment rooms and all therapy gyms interior design have come to serve not only the aesthetic purpose but have put the functional use in the top of its priorities, in attempt to create homogeneous environment between in and out.

And based on green architecture and sustainable method of green building design, we tried to shape most of interior spaces with greenery as much as we can to help out the patient to get more benefits while their stay for rehabilitation.



Czech Rehabilitation Hospital, Al Ain, UAE.
9.5 The final Approved design concept by May Makarem.
9.6 Section in double height glazed entrance lobby.



Czech Rehabilitation Hospital, Al Ain, UAE.
9.7 Corridors & Sub Nursing Stations final Approved design
concept by May Makarem.

9.8 Waiting area of Therapy Gym & Sub Nursing.
9.9 VIP Inpatient Sweet guest lounge.
9.10 Normal treatment room



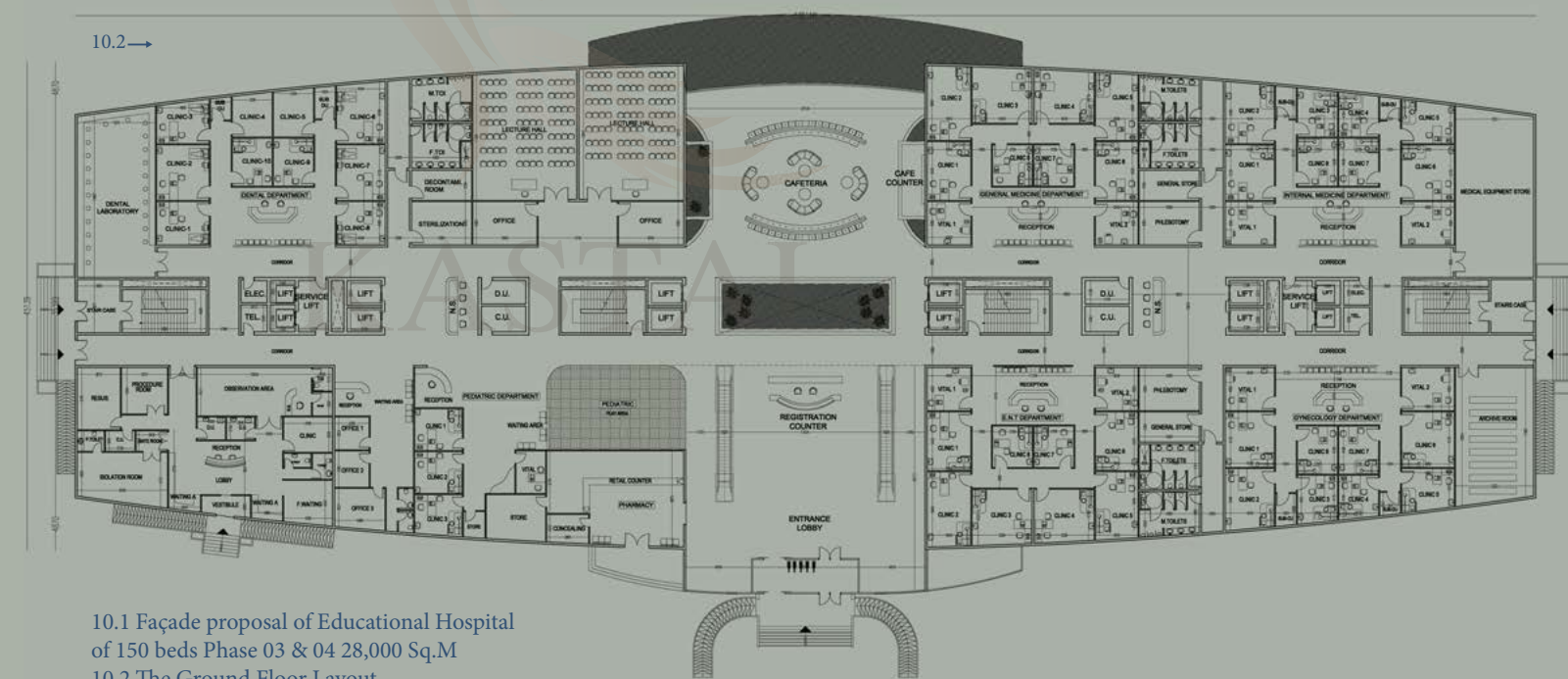


MEDICINE OF THE FUTURE

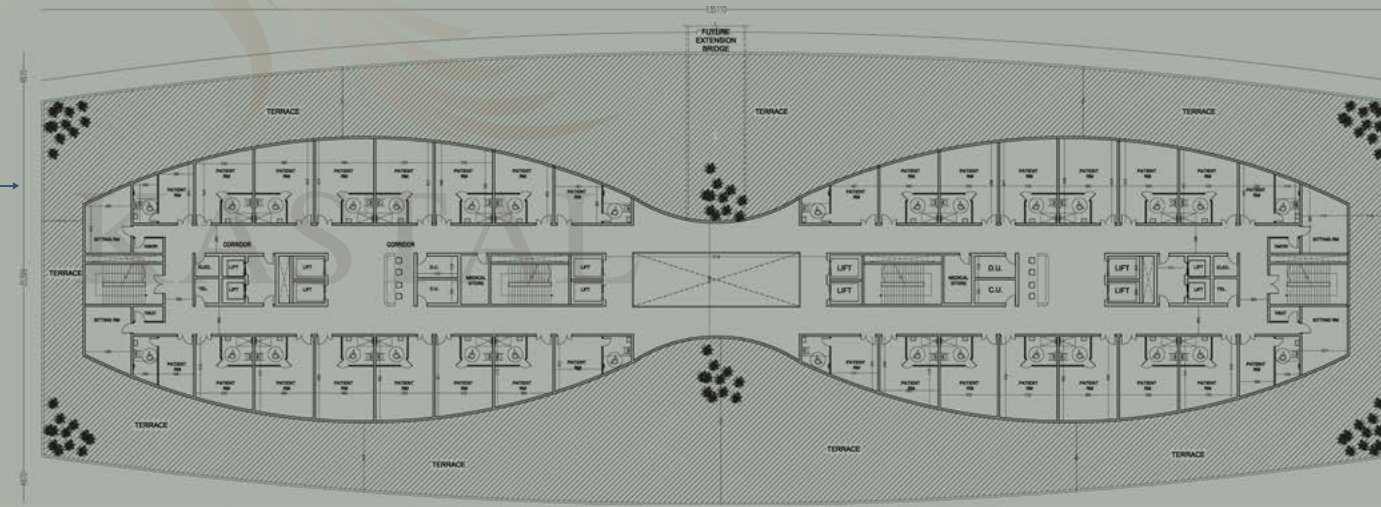
UAEU EDUCATIONAL HOSPITAL MEDICAL BUILDINGS, AI AIN, UAE

United Arab Emirates University is the oldest University in UAE, and this proposal has created as new building named Center Medicine of Future as a part of the university strategic plan to have suitable environment in attempt to allow its students to research and develop new health ways and medicines in drugstores.

10.2 →

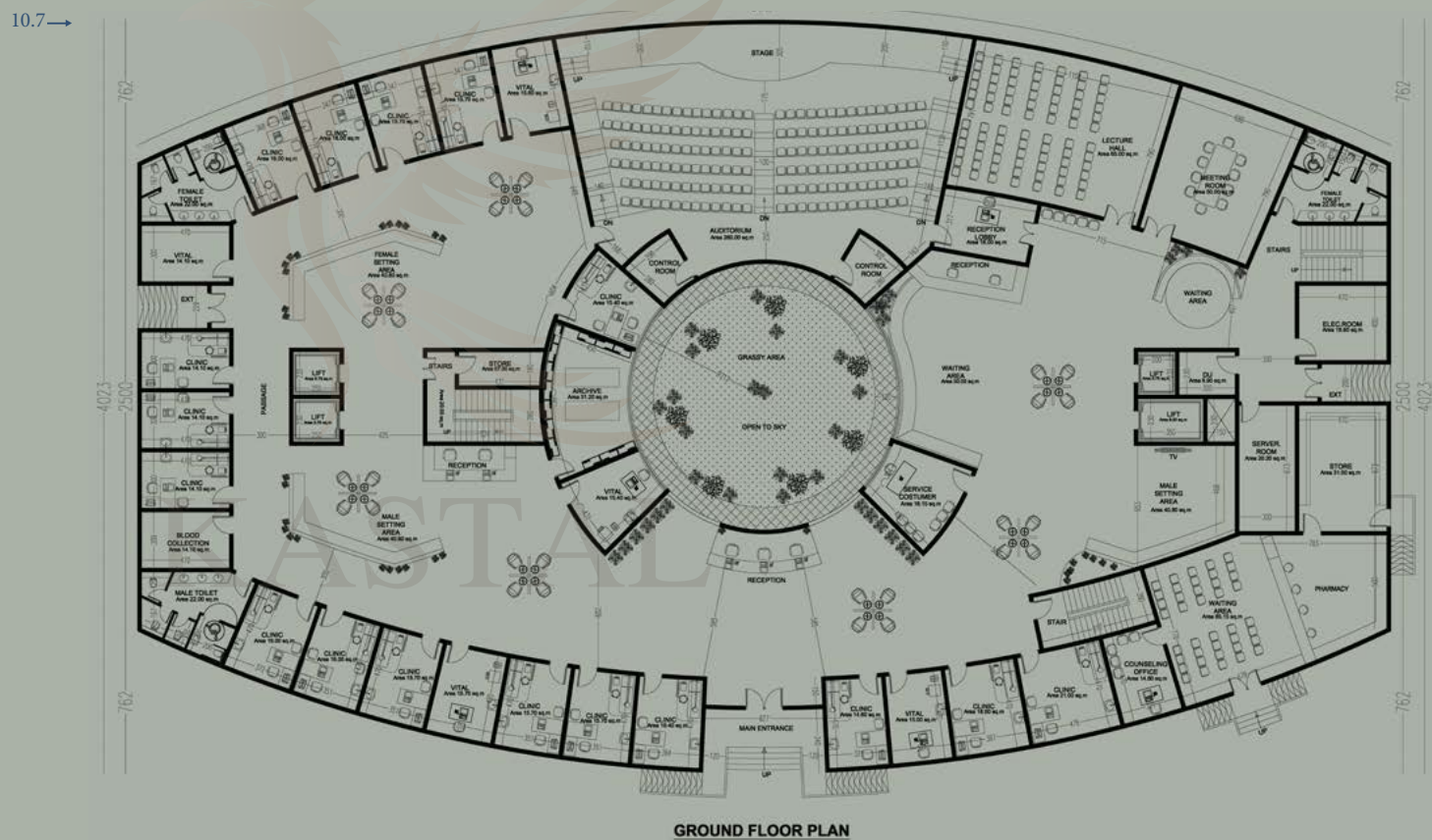


10.1 Façade proposal of Educational Hospital
of 150 beds Phase 03 & 04 28,000 Sq.M
10.2 The Ground Floor Layout.



10.3 Façade proposal of Educational Hospital of 150 beds Phase 03 & 04 28,000 Sq.M
10.4 The Mezzanine Floor Layout.
10.5 The plan is the rest of typical Floors

We always set our goals to achieve such massive work, through calculating the project management timeframe to control and monitoring the smooth running of all work activities as expected.



10.6 Façade proposal of Medical Center Research Buildings Phase 1 & 2 of 5,00 Sq.M
10.7 The Ground Floor Layout.



AD POLICE HEALTH CARE CENTER ABU DHABI, UAE

We design our health care projects based on high Level understanding of medical interior spaces and exact requirements, like all required clinics, laboratories, waiting areas, receptions and lobbies... etc. And full study of Patients' Flowchart and Detailed Flowchart of Medicare Billing Process for each project apart according to HAAD rules and regulations, in order to get a better care experience for patients or staff.



12.1, 12.3 Fashion Restaurant New Concept Design, Dubai
12.2 Mood picture. Designed by May Makarem



12.1, 12.3 Fashion Restaurant New Concept Design, Dubai
12.2 Mood picture. Designed by May Makarem

RESTAURANTS

FASHION RESTUARANT NEW CONCEPT, DUBAI

The dining area, the kitchen, the bar, the waiting area, the outdoor design, and the restrooms all these are the core substances to build any restaurant, and here we assign them with their theme as well as location taking into account the maximum seating capacity and to keep it busy, but without affecting the atmosphere where customers gather to enjoy a good meal and each other's company.





12.1, 12.3 Fashion Restaurant New Concept Design, Dubai
 12.2 Mood picture. Designed by May Makarem

Fashion Restaurant new design concept reflects Modern Moroccan style using high end golden glass and light effects, the central column has been designed to become Islamic floral chandelier which draws its reflection inlaid green marble into the white marble We address the need of each type of clients' demands and their vision for their desirable restaurant, coffee, or shop. Also, we can simply exceed the boundaries of our imagination with no limitations in attempt



12.6 Selection of golden accessories to add more glamour to the interiors



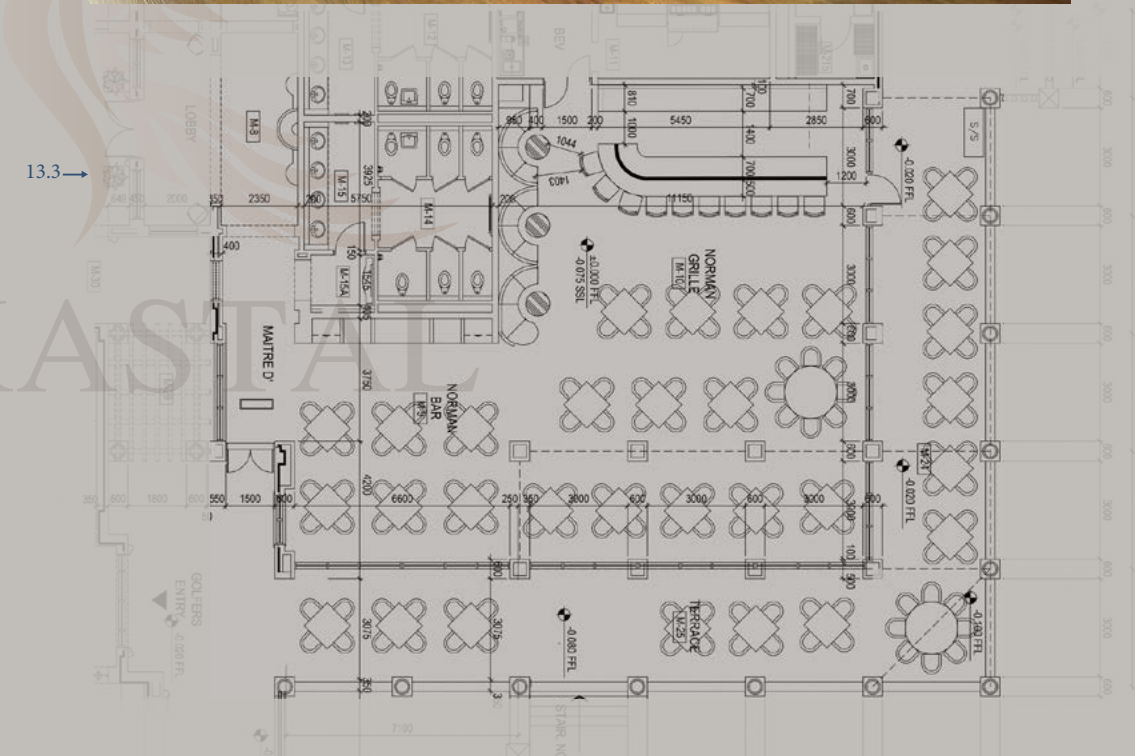


13.1, 13.2 Jumeirah Golf Club Sports Bar, Dubai
13.3 The plan of sports bar. Designed by May Makarem

to meet the latest trend and technologies having in view the top-quality materials of suppliers known worldwide.


JUMEIRAH GOLF CLUB, SPORTS BAR

Following a refurbishment, we did in 2016, now the bar is looking more sleek and lively place, reflecting youthfulness and cosy atmosphere with its many TV screens showing the latest kick-off.





KASTAL DESIGN & BUILD

Office 301, Opal Tower, Business Bay,
Dubai, United Arab Emirates.  [kastal.ae](https://www.kastal.ae)

T +971 55 1199 712 | info@kastal.ae

www.kastal.ae